



Westray
Hemel Hempstead, HP3 8TE

squire | estates

Westray, Hemel Hempstead

This very spacious ONE BEDROOM ground floor apartment with GAS CENTRAL HEATING is located in a popular road in Northend with ample residents parking and communal gardens

The property comprises of an spacious entrance hall opening to a bright and spacious lounge/dining room with southerly views to the communal garden. The kitchen is fitted with ample wall and base units, integrated Zanussi oven and electric hob. Situated off the hall is a useful large storage room which is currently being used as a computer room/study.

The bedroom is a large room also with views to the communal garden. The shower room is fully tiled with a modern shower unit with a waterfall overhead shower and a hand held shower, a pedestal wash hand basin and WC.

Externally there are communal gardens and ample residents parking.

Available from 07/07/21

Features

- ONE Large bedroom
- Ground floor
- GAS Central heating
- Communal gardens
- Computer room/study
- Fully tiled shower room
- Residents parking
- Available from 07/07/21

To Book a Viewing

Please contact Squire Estates on 01442 233533.

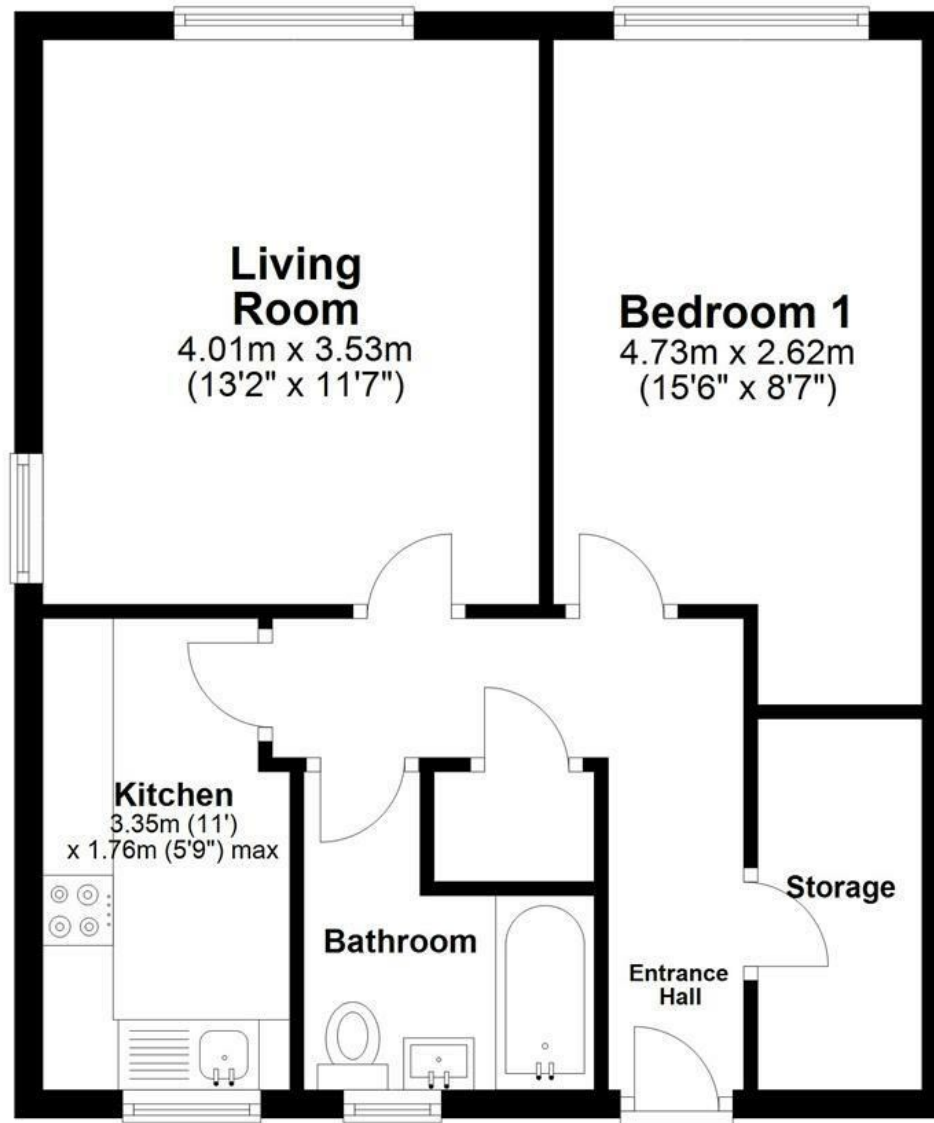
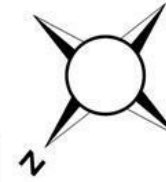
Please note we have not tested any apparatus, fixtures, fittings, or services. Interested parties must undertake their own investigation into the working order of these items. All measurements are approximate and photographs provided for guidance only.



Energy Efficiency Rating		
	Current	Potential
Very energy efficient - lower running costs		
(92 plus) A		
(81-91) B		
(69-80) C	69	72
(55-68) D		
(39-54) E		
(21-38) F		
(1-20) G		
Not energy efficient - higher running costs		
England & Wales	EU Directive 2002/91/EC	

Floor Plan

Approx. 46.7 sq. metres (502.4 sq. feet)



Total area: approx. 46.7 sq. metres (502.4 sq. feet)

Disclaimer - Floor plan is for marketing purposes only and is to be used as a guide.
Plan produced using PlanUp.



67 Marlowes, Hemel Hempstead, Hertfordshire, HP1 1LE
01442 233533 | www.squirestates.co.uk