



10 Westerdale, Hemel Hempstead, Hertfordshire HP2 5TJ
£950 PCM

squire | estates

PART-FURNISHED. Squire Estates are pleased to market , this exceptionally spacious **TWO DOUBLE BEDROOM** apartment with **GAS CENTRAL HEATING** conveniently located for both the historic Hemel Hempstead **OLD TOWN** and **TOWN CENTRE**.

This well planned raised ground floor apartment offers spacious accommodation throughout, consisting of a hallway with a useful a storage cupboard, a large lounge/dining room with a feature television recess, a well fitted kitchen accessed off the lounge with ample units, integrated appliances including a double oven, gas hob, dishwasher and space for a fridge/freezer and plumbing and space for a washing machine. The property benefits from gas central heating with a combination boiler which is four years old. An inner hallway leads to a spacious master bedroom with fitted wardrobes and bedroom two. There is a fully tiled bathroom with a bath sink and WC. There is also a large storage room which would make a small office/computer room. Externally to the front there is a pathway and an attractive grassed area leading to the main front door. There is ample parking close by. Available from 31/07/21

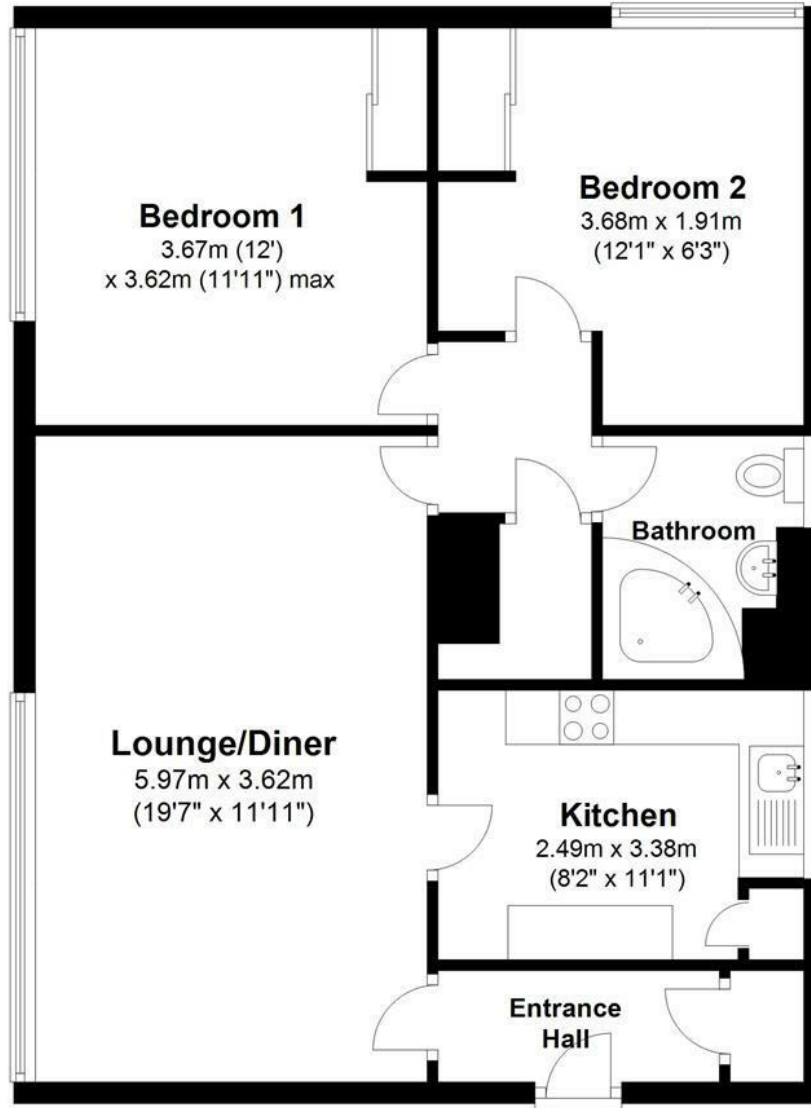






Floor Plan

Approx. 69.5 sq. metres (748.3 sq. feet)



Total area: approx. 69.5 sq. metres (748.3 sq. feet)

Disclaimer - Floor plan is for marketing purposes only and is to be used as a guide.
Plan produced using PlanUp.

Energy Efficiency Rating		Current	Potential
Very energy efficient - lower running costs			
(92 plus) A			
(81-91) B			
(69-80) C			
(55-68) D			
(39-54) E			
(21-38) F			
(1-20) G			
Not energy efficient - higher running costs			
England & Wales		EU Directive 2002/91/EC	
Environmental Impact (CO ₂) Rating		Current	Potential
Very environmentally friendly - lower CO ₂ emissions			
(92 plus) A			
(81-91) B			
(69-80) C			
(55-68) D			
(39-54) E			
(21-38) F			
(1-20) G			
Not environmentally friendly - higher CO ₂ emissions			
England & Wales		EU Directive 2002/91/EC	