



High Street
Hemel Hempstead, HP1

squire **estates**
Every home tells a story

High Street

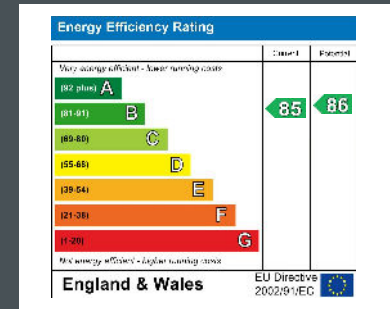
Rarely available and situated in the heart of the beautifully redeveloped Old Town. This first floor two bedroom property benefits from a good sized lounge to the front with a fantastic bow window overlooking the High Street complete with window seat, a fully fitted and applanced kitchen, two bedrooms and family bathroom with shower. Available from 13/12/21

Features

- Old Town Location
- First Floor Location
- Overlooking The High Street
- Two Bedrooms
- Available from 13/12/21
- Must Be Seen

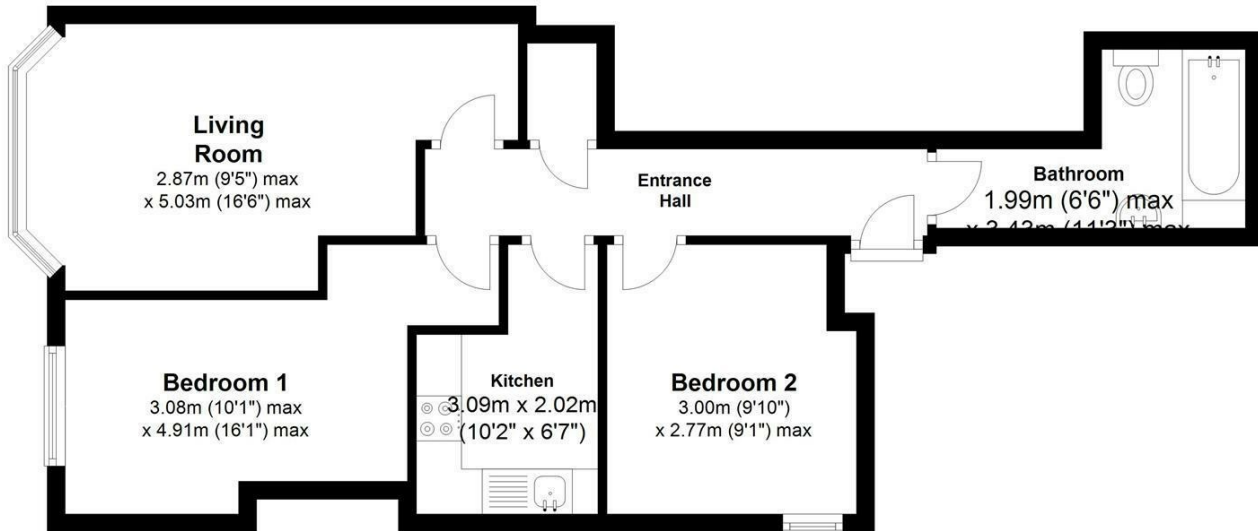
Viewing

Please contact Squire Estates on 01442 233533

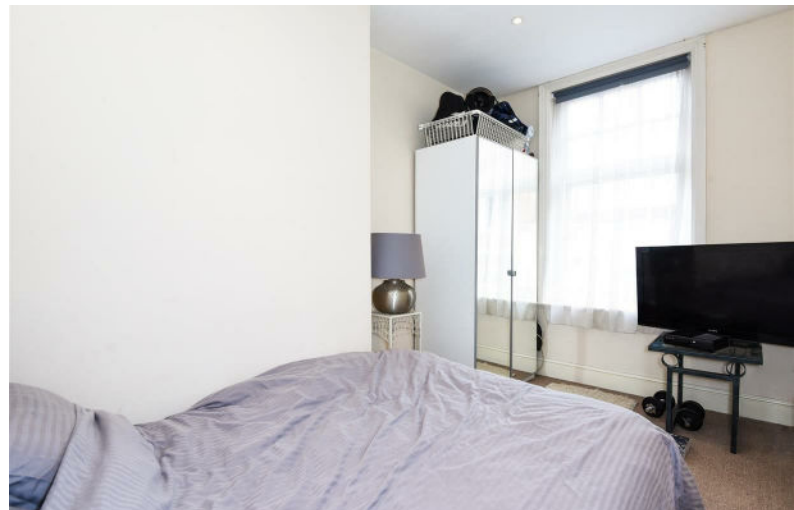


Floor Plan

Approx. 48.1 sq. metres (517.8 sq. feet)



Total area: approx. 48.1 sq. metres (517.8 sq. feet)



67 Marlowes, Hemel Hempstead, Hertfordshire, HP1 1LE
01442 233533 | www.squirestates.co.uk