



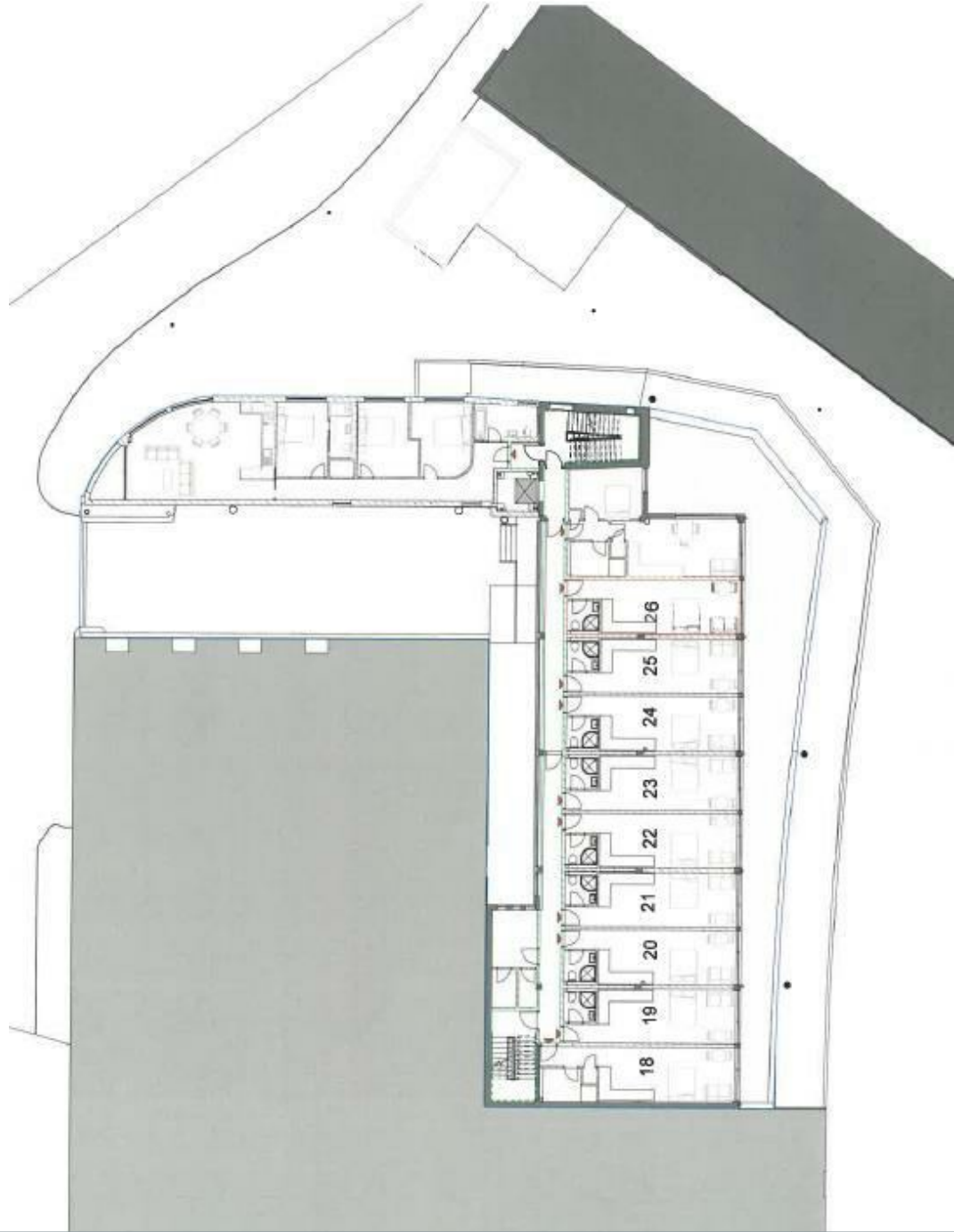
11 Becketts Yard Selden Hill, Hemel Hempstead, Hertfordshire
HP2 4TQ

squire | estates

FULLY FURNISHED** Squire Estates are pleased to market this first floor studio apartment in Becket's Yard, Selden Hill. The apartments are set in the heart of the town centre and designed with modern lifestyles in mind. The properties comprise of a white ' High Gloss ' kitchen with integrated appliances, Amica oven and ceramic hob and SMEG washer dryer. There is a separate and contemporary shower room. These stylish apartments are offered to a high specification throughout. Available Now

Please note there is no parking with the apartments.





Energy Efficiency Rating		
	Current	Potential
Very energy efficient - lower running costs		
(92 plus) A		
(81-91) B		
(69-80) C	77	77
(55-68) D		
(39-54) E		
(21-38) F		
(1-20) G		
Not energy efficient - higher running costs		
England & Wales		
EU Directive 2002/91/EC		
Environmental Impact (CO ₂) Rating		
	Current	Potential
Very environmentally friendly - lower CO ₂ emissions		
(92 plus) A		
(81-91) B		
(69-80) C		
(55-68) D		
(39-54) E		
(21-38) F		
(1-20) G		
Not environmentally friendly - higher CO ₂ emissions		
England & Wales		
EU Directive 2002/91/EC		