



1 Bowmans Court, Hemel Hempstead, Herts HP2 5SD
£900 PCM

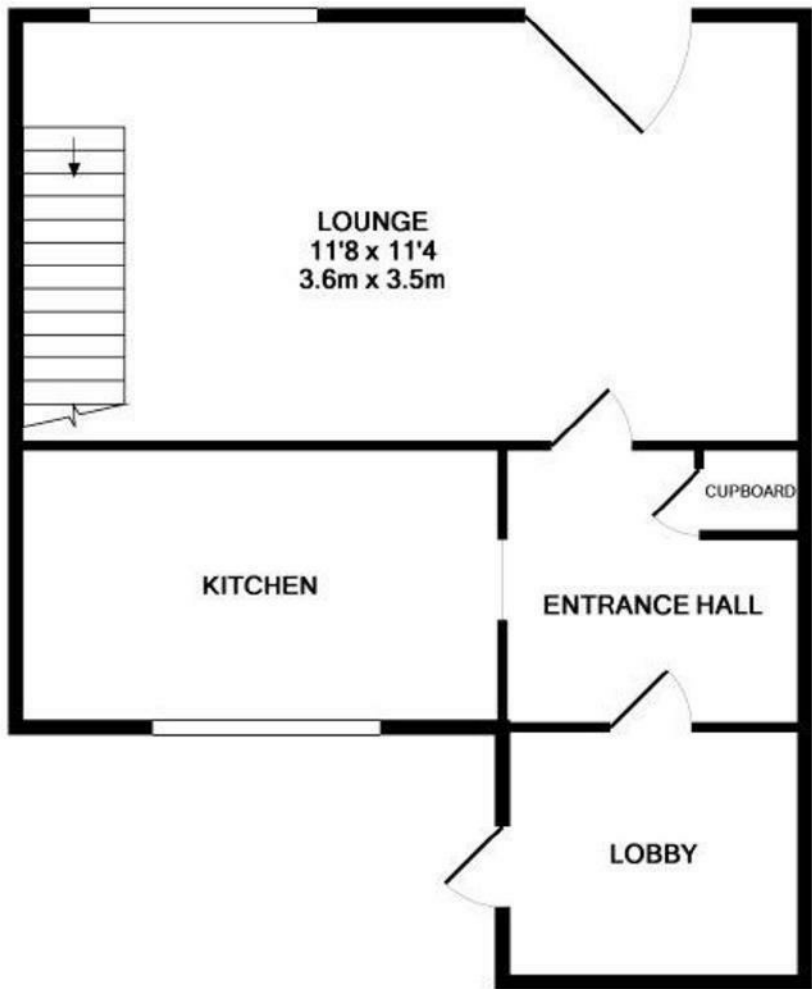
squire | estates

Rarely available! A one bedroom house with its own rear garden. The property comprises of lounge, fully fitted and applianced kitchen, double bedroom and bathroom with shower. Available from 03/06/2022 with off road parking.

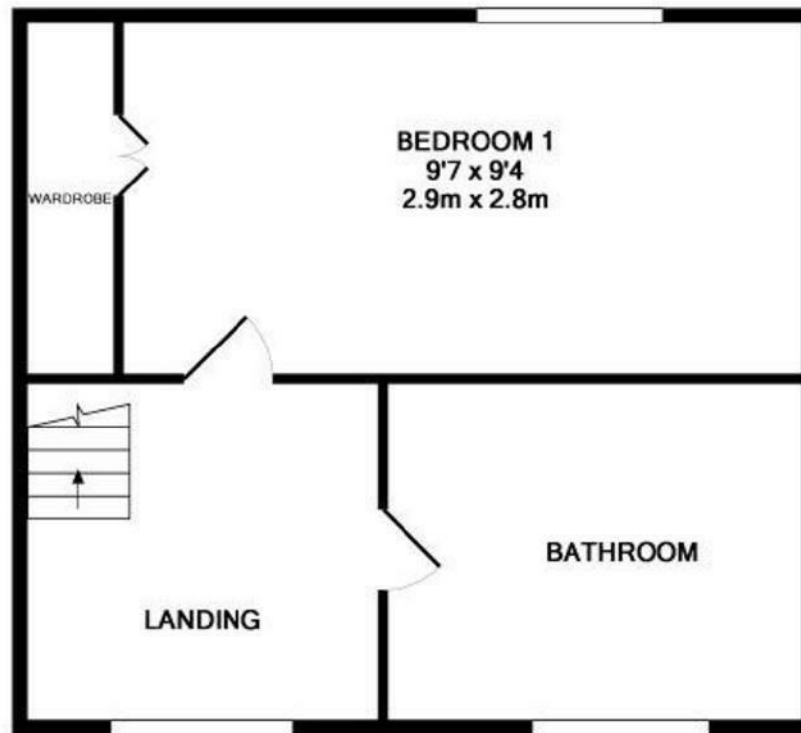








GROUND FLOOR



1ST FLOOR

Whilst every attempt has been made to ensure the accuracy of the floor plan contained here, measurements of doors, windows, rooms and any other items are approximate and no responsibility is taken for any error, omission, or mis-statement. This plan is for illustrative purposes only and should be used as such by any prospective purchaser. The services, systems and appliances shown have not been tested and no guarantee as to their operability or efficiency can be given
Made with Metropix ©2014

