



62 Arkley Court, Hemel Hempstead, Herts HP2 7JT
£950 PCM

squire | estates

This first floor flat is close to the industrial area in Hemel Hempstead. The flat benefits from a modern spacious lounge, kitchen, two bedrooms (one double) and bathroom with shower. Available from 20/07/22

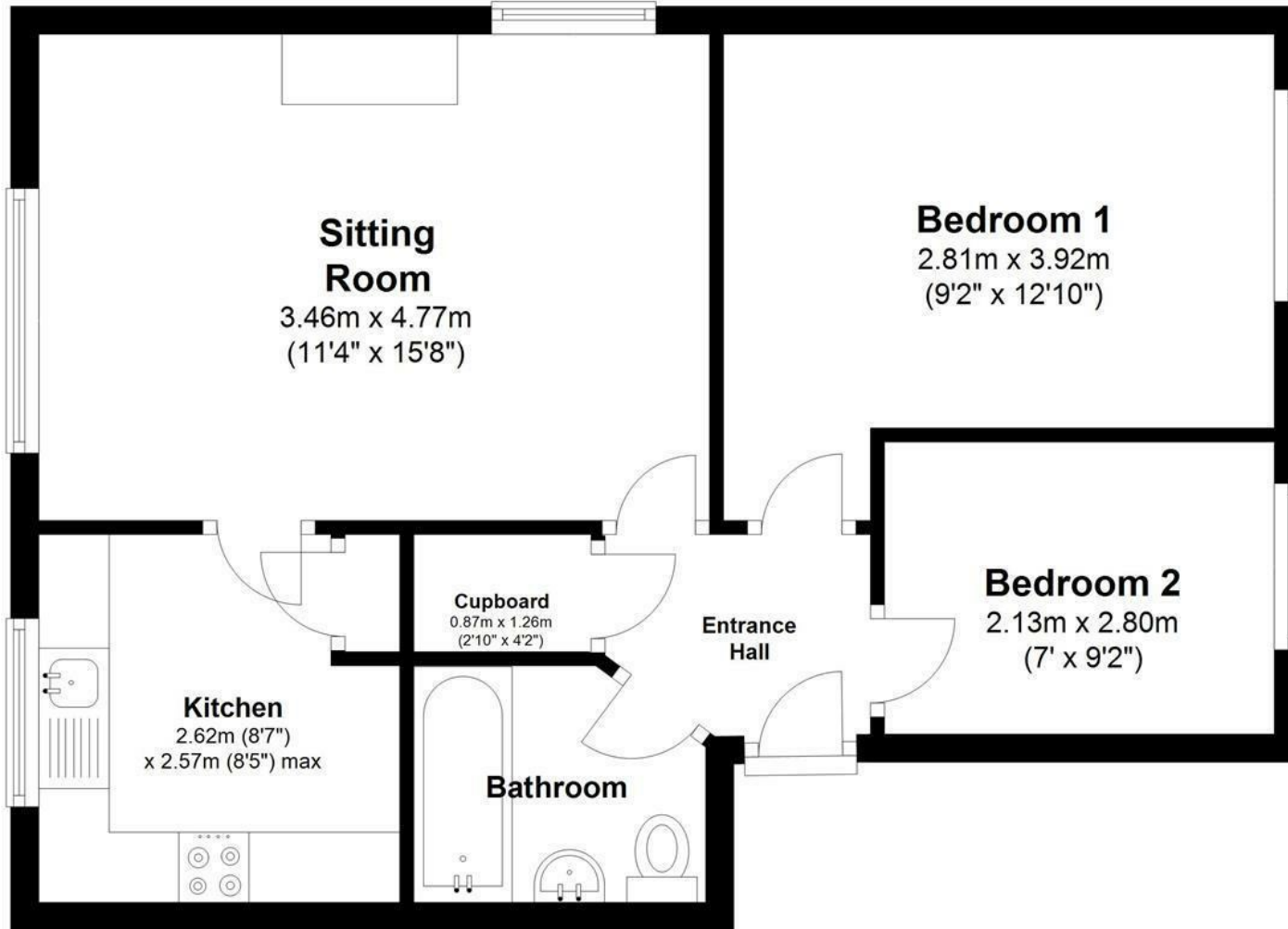
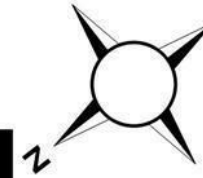






Floor Plan

Approx. 49.7 sq. metres (535.5 sq. feet)



Total area: approx. 49.7 sq. metres (535.5 sq. feet)

Disclaimer - Floor plan is for marketing purposes only and is to be used as a guide.
Plan produced using PlanUp.

Energy Efficiency Rating		Current	Potential
Very energy efficient - lower running costs			
(92 plus) A			80
(81-91) B			
(69-80) C			
(55-68) D		63	
(39-54) E			
(21-38) F			
(1-20) G			
Not energy efficient - higher running costs			
England & Wales		EU Directive 2002/91/EC	
Environmental Impact (CO ₂) Rating			
Very environmentally friendly - lower CO ₂ emissions			
(92 plus) A			66
(81-91) B			
(69-80) C			
(55-68) D		48	
(39-54) E			
(21-38) F			
(1-20) G			
Not environmentally friendly - higher CO ₂ emissions			
England & Wales		EU Directive 2002/91/EC	