



The Pastures
Hemel Hempstead, HP1

squire | estates

The Pastures

Located in Fields End, ONE BEDROOM FREEHOLD home has GAS CENTRAL HEATING, private garden and one ALLOCATED PARKING space located very close to the property.

To the ground floor the property comprises an entrance hall opening to a good size lounge with featured bay window. There is a kitchen with a fitted oven and hob over, ample wall and floor units with a breakfast bar and space for fridge/freezer and washing machine. Stairs from the lounge lead up to a landing opening to a large double bedroom and a bathroom with bath, sink and WC.

Externally, there is allocated parking directly in front of the property and a small fenced garden.

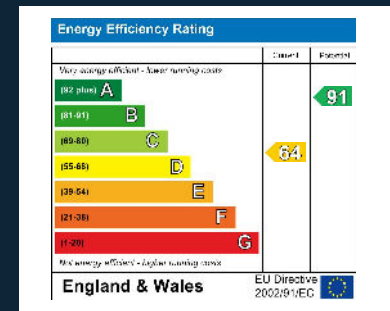
Bordering lots of green land, Fields End is a tucked away residential area that currently offers well positioned houses off a “no-through” road. It is a quiet area, with excellent access to Potten End and links to Berkhamsted. Fields end offers a mixture of homes, perfect for families, couples, and single occupants alike. JFK secondary School is a very short walk from Fields End.

Features

- One Bedroom Cluster Home
- Freehold
- Private garden area
- Allocated parking space
- No Upper Chain
- Council tax band C

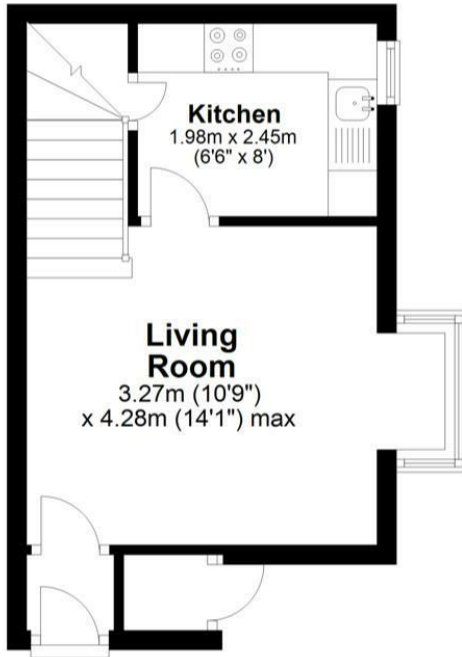
Viewing

Please contact Squire Estates on 01442 233533



Ground Floor

Approx. 21.2 sq. metres (227.7 sq. feet)



First Floor

Approx. 19.8 sq. metres (213.6 sq. feet)



Total area: approx. 41.0 sq. metres (441.3 sq. feet)

Disclaimer - Floor plan is for marketing purposes only and is to be used as a guide - SKM Studio
Plan produced using PlanUp.



67 Marlowes, Hemel Hempstead, Hertfordshire, HP1 1LE
01442 233533 | www.squirestates.co.uk