



Hilldown Road
Hemel Hempstead, HP1

squire | estates

Hilldown Road

Squire Estates are pleased to introduce a stunning THREE bedroom family home that blends contemporary elegance with functional design. The property is in the popular area of Gadebridge within walking distance to primary and secondary schools as well as local shops.

The property boasts a sleek black gloss kitchen with co-ordinating work surfaces, complete with an integrated dishwasher, range cooker and gas hob, there is also ample space for a fridge freezer. The kitchen is a true centrepiece, offering both style and practicality for culinary enthusiasts.

Adjacent to the kitchen, you will find a convenient utility room, useful for laundry and storing cleaning supplies, this space adds an extra layer of functionality to the home.

The lounge/diner is a bright and airy space with a featured electric fireplace, and wooden flooring. The dining room has sliding doors leading onto the rear garden, which has a patio for entertaining and mainly laid to lawn with flowered borders.

On the first floor the property offers three well-proportioned bedrooms, each providing a comfortable sanctuary. The family bathroom, where you can indulge in a soothing bath, the room also comprises of a separate shower, sink, WC and heated towel rail.

Parking will never be an issue, as this home offers ample space for two cars, ensuring convenience and ease of access.

Location

Positioned in the popular area of Gadebridge, this area offers a perfect location for families- with its own parade of shops, community centre, and lots of green space hosting weekly sessions such as football and running. Gadebridge is within walking distance to the town centre, a close drive Potten End and is close to Gadebridge Park. Running through the heart of the town, Gadebridge Park provides acres of space for recreation, including bowls, a Splash Park, a skate park and a children's play area.

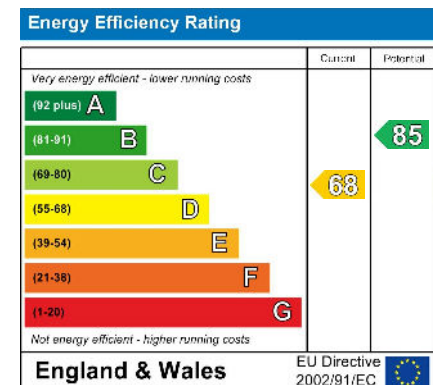


Features

- Three bedroom family home
- CHAIN FREE
- Modern stylish kitchen
- Utility room
- Parking for two cars
- Council tax band C

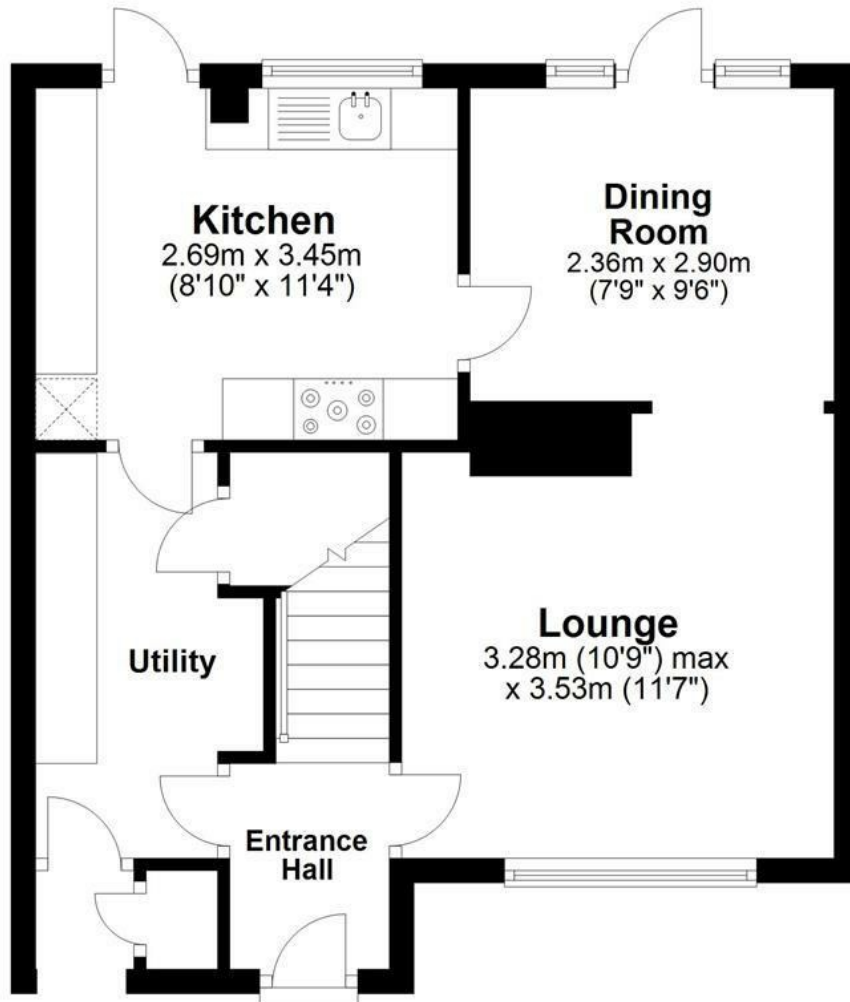
Viewing

Please contact Squire Estates on 01442 233533.



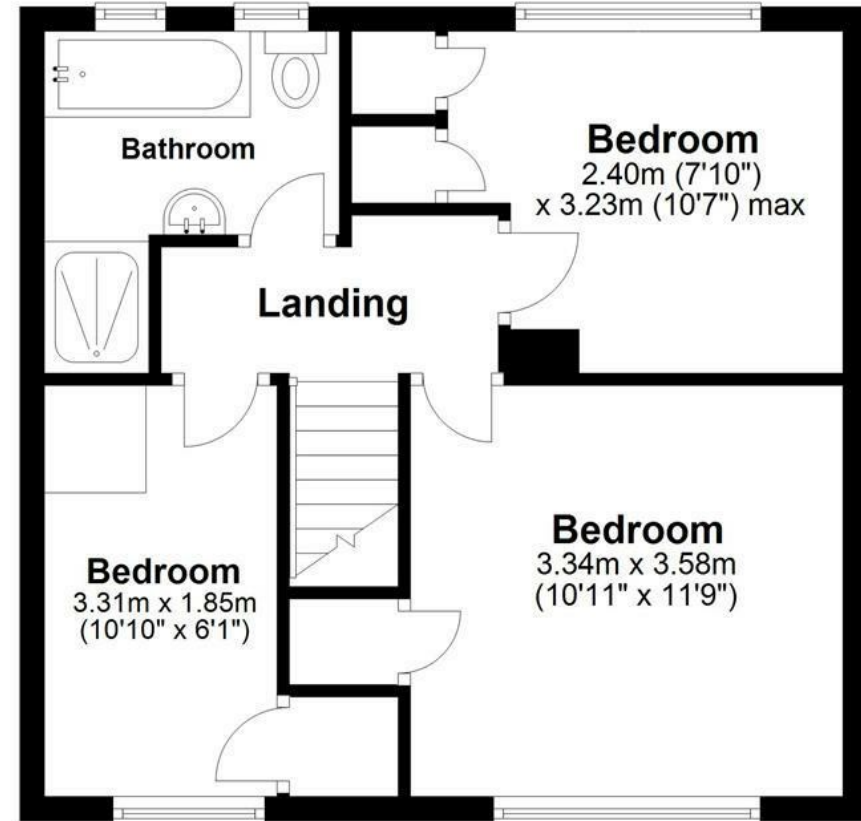
Ground Floor

Approx. 41.0 sq. metres (441.5 sq. feet)



First Floor

Approx. 40.6 sq. metres (436.9 sq. feet)



Total area: approx. 81.6 sq. metres (878.4 sq. feet)

Disclaimer - Floor plan is for marketing purposes only and is to be used as a guide - SKM Studio
Plan produced using PlanUp.



67 Marlowes, Hemel Hempstead, Hertfordshire, HP1 1LE
01442 233533 | www.squirestates.co.uk