



46 Half Moon Meadow, Hemel Hempstead, Herts HP2 7SD
£700 PCM

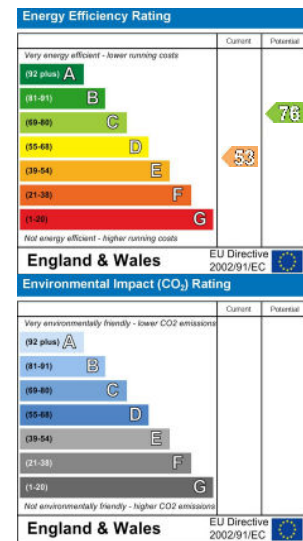
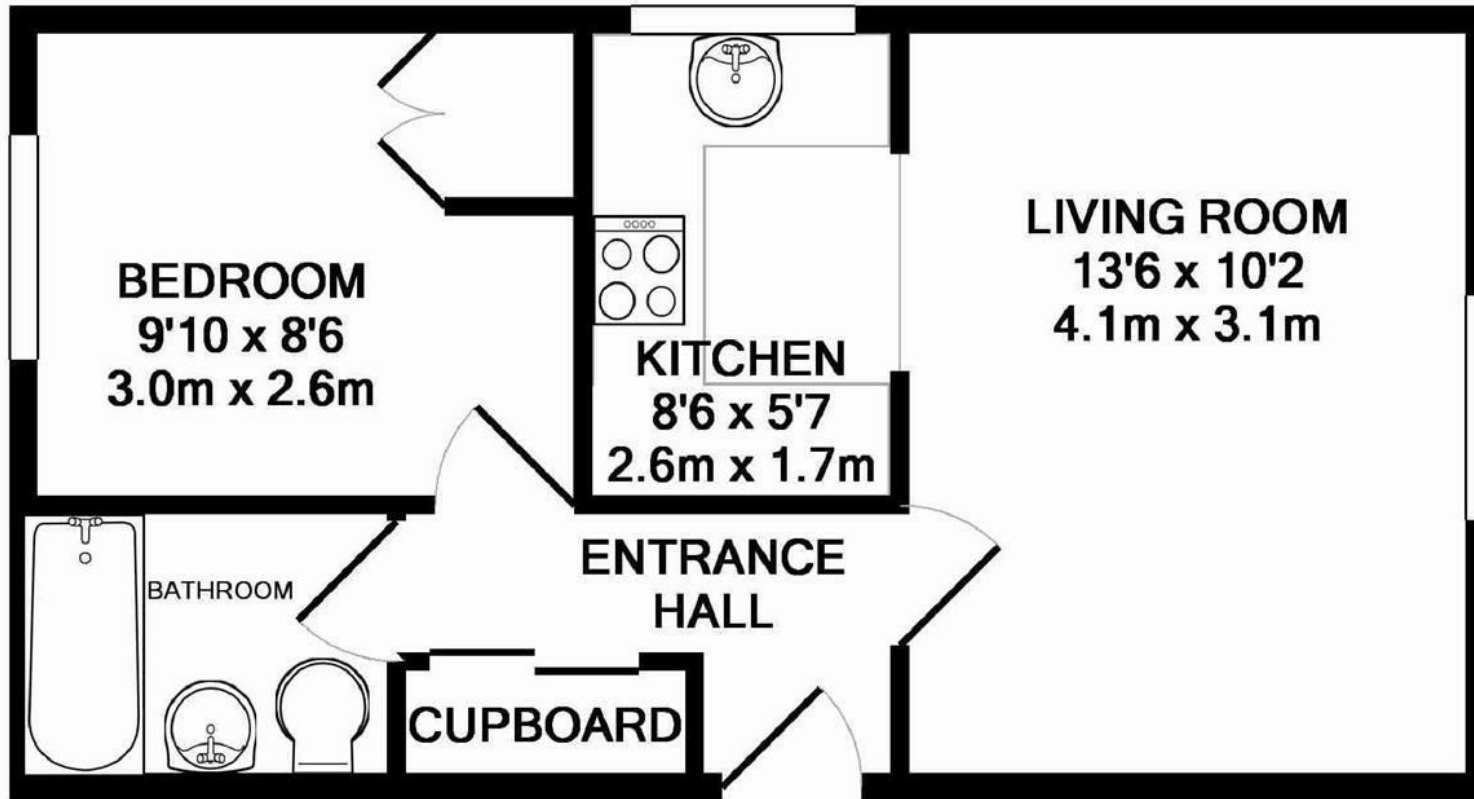
squire | estates

A very well presented one bedroom top floor apartment comprising of spacious lounge, fully fitted and applianced kitchen, double bedroom and bathroom with shower, the property further benefits from loft storage, allocated parking space available from 11/07/2017, unfurnished.



A very well presented one bedroom top floor apartment comprising of spacious lounge, fully fitted and applianced kitchen, double bedroom and bathroom with shower, the property further benefits from loft storage, allocated parking space available from 11/07/2017, unfurnished.





TOTAL APPROX. FLOOR AREA 346 SQ.FT. (32.1 SQ.M.)

Whilst every attempt has been made to ensure the accuracy of the floor plan contained here, measurements of doors, windows, rooms and any other items are approximate and no responsibility is taken for any error, omission, or mis-statement. This plan is for illustrative purposes only and should be used as such by any prospective purchaser. The services, systems and appliances shown have not been tested and no guarantee as to their operability or efficiency can be given

Made with Metropix ©2014