



squire | estates

Clarendon Close
Hemel Hempstead, HP2

squire | estates

Clarendon Close

Nestled in a quiet residential neighbourhood, this ONE BEDROOM GROUND FLOOR flat presents an exciting opportunity for those seeking a property with character and the potential to add their personal touch. Boasting a separate large kitchen and a lounge area awaiting modernization, this residence invites creativity and customization.

Enjoy the ease of access with this ground floor flat, providing a convenient living experience for individuals of all ages. No need to navigate stairs, making this an ideal option for those who prefer single-level living.

The heart of this home is the generously sized separate kitchen, offering ample space for culinary enthusiasts to create and entertain. With the potential to be transformed into a modern and stylish culinary haven, this kitchen is a canvas waiting for your personal touch.

Bathroom is fitted with a bath with shower over, sink and WC.

The lounge area presents an exciting opportunity for modernization and customization. With its ample space and natural light, envision a contemporary and inviting living space tailored to your unique taste and lifestyle.

Large windows throughout the flat allow an abundance of natural light to flood the interior, creating a bright and airy ambiance that enhances the overall living experience. A door leading out the the communal gardens from the lounge. Double bedroom with a window overlooking the communal gardens.

There is also one parking space, and multiple visitor spaces .

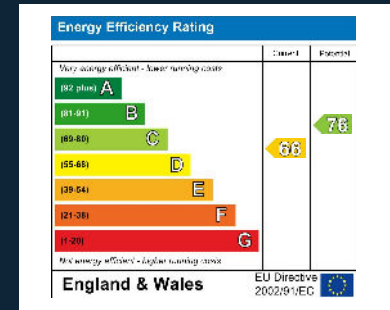
Situated within walking distance to the old town, and main town centre.

Features

- One Bedroom Apartment
- Ground floor
- Large Kitchen
- In need of some modernisation
- Residents Parking
- Door leading onto a communal garden
- Council tax band B
- Current tenant pays £1000pcm.
- Can be sold with vacant possession

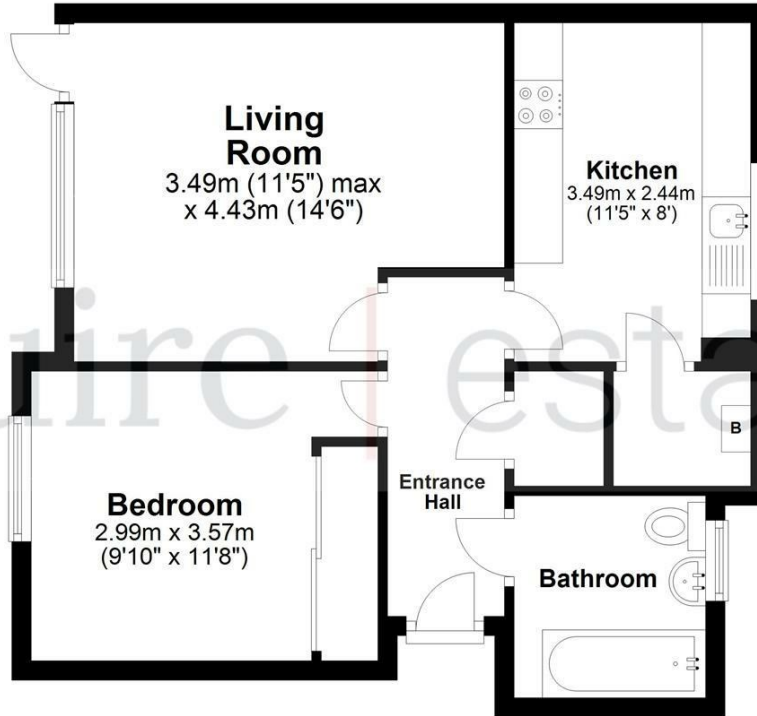
Viewing

Please contact Squire Estates on 01442 233533



Floor Plan

Approx. 46.8 sq. metres (504.1 sq. feet)



Total area: approx. 46.8 sq. metres (504.1 sq. feet)

Disclaimer - Floor plan is for marketing purposes only and is to be used as a guide - SKM Studio
Plan produced using PlanUp.

