



Half Moon Meadow
Hemel Hempstead, HP2 7SD

squire | estates

Half Moon Meadow, Hemel Hempstead

****FURNISHED**** This GROUND FLOOR flat is located in a CUL-DE-SAC in Hunters Oak.

The property opens up in to a spacious hallway, creating a great first impression. To the left is a generous size, carpeted, double bedroom. On the right you will find the large lounge with an archway into the kitchen with ample counter space making prepping and cooking meals simple. There is also a refurbished modern fully tiled bathroom comprising of a bath with shower attachment, basin and WC pedestal unit.

Available now!

Features

- One bedroom apartment
- Ground floor
- Refurbished bathroom
- EPC - D
- Council tax band B
- Available now
- Close to Maylands avenue
- FURNISHED

To Book a Viewing

Please contact Squire Estates on 01442 233533.

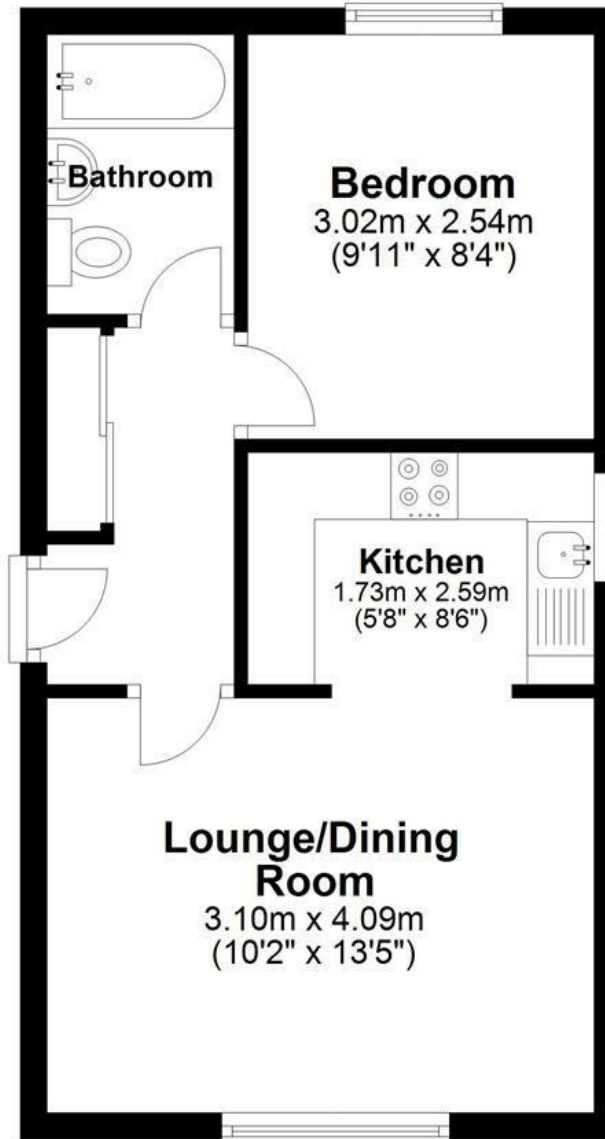
Please note we have not tested any apparatus, fixtures, fittings, or services. Interested parties must undertake their own investigation into the working order of these items. All measurements are approximate and photographs provided for guidance only.



Energy Efficiency Rating		
	Current	Potential
<i>Very energy efficient - lower running costs</i>		
92 plus) A		
(81-91) B		
(69-80) C		75
(55-68) D	60	
(39-54) E		
(21-38) F		
(1-20) G		
<i>Not energy efficient - higher running costs</i>		
England & Wales	EU Directive 2002/91/EC	

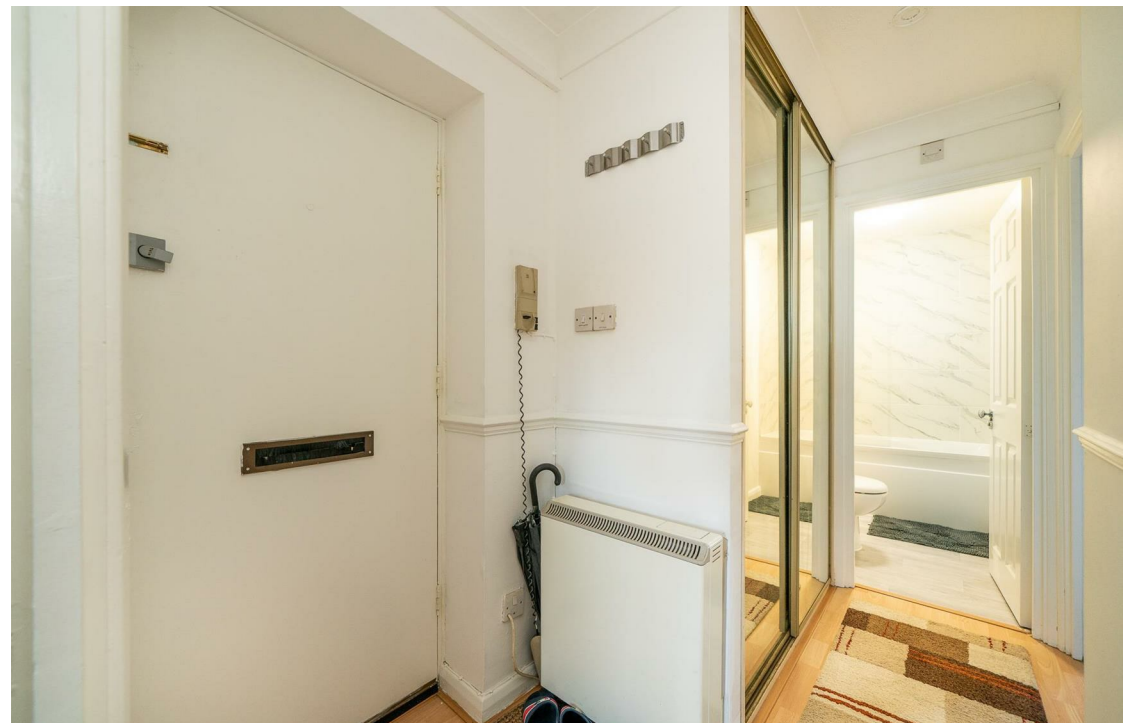
Ground Floor

Approx. 32.9 sq. metres (353.9 sq. feet)



Total area: approx. 32.9 sq. metres (353.9 sq. feet)

Disclaimer - Floor plan is for marketing purposes only and is to be used as a guide - SKM Studio
Plan produced using PlanUp.



67 Marlowes, Hemel Hempstead, Hertfordshire, HP1 1LE
01442 233533 | www.squirestates.co.uk