



London Road
Hemel Hempstead, HP3 9FH

squire | estates

London Road, Hemel Hempstead

A very BRIGHT & SPACIOUS GROUND FLOOR flat with TWO BEDROOMS, a large lounge, fully fitted kitchen and unallocated parking. The property is within walking distance of APSLEY STATION and local shops. Available Now.

Features

- Ground Floor Flat
- Two Bedrooms
- Large Lounge
- Near Apsley Station
- Parking
- Fully Fitted Kitchen
- Available Now
- EPC - C
- Council tax - C

To Book a Viewing

Please contact Squire Estates on 01442 233533.

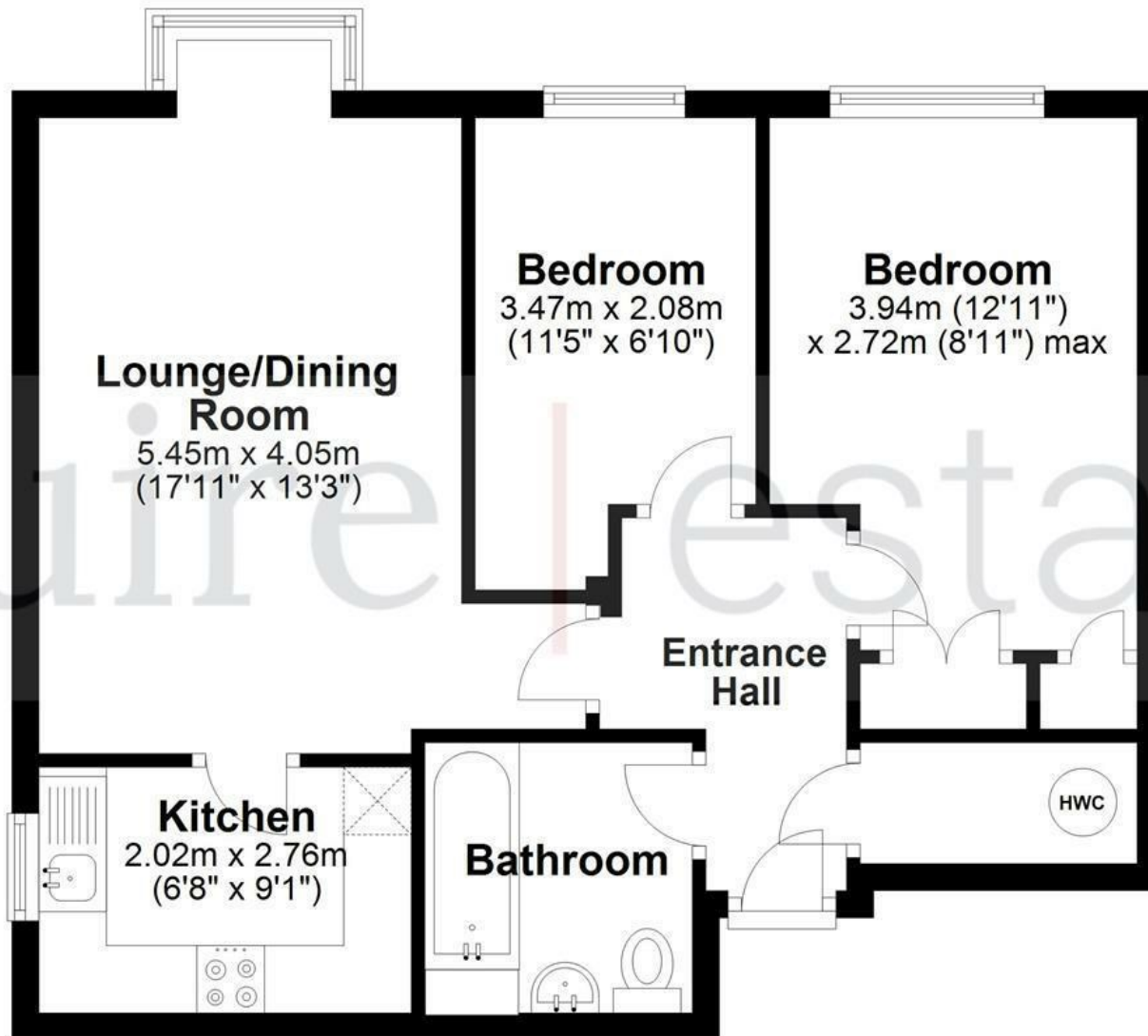
Please note we have not tested any apparatus, fixtures, fittings, or services. Interested parties must undertake their own investigation into the working order of these items. All measurements are approximate and photographs provided for guidance only.



Energy Efficiency Rating		Current	Potential
Very energy efficient - lower running costs			
(92 plus) A			
(81-91) B			
(69-80) C		72	75
(55-68) D			
(39-54) E			
(21-38) F			
(1-20) G			
Not energy efficient - higher running costs			
England & Wales		EU Directive 2002/91/EC	

Floor Plan

Approx. 51.5 sq. metres (554.7 sq. feet)



Total area: approx. 51.5 sq. metres (554.7 sq. feet)

Disclaimer - Floor plan is for marketing purposes only and is to be used as a guide - SKM Studio
Plan produced using PlanUp.

